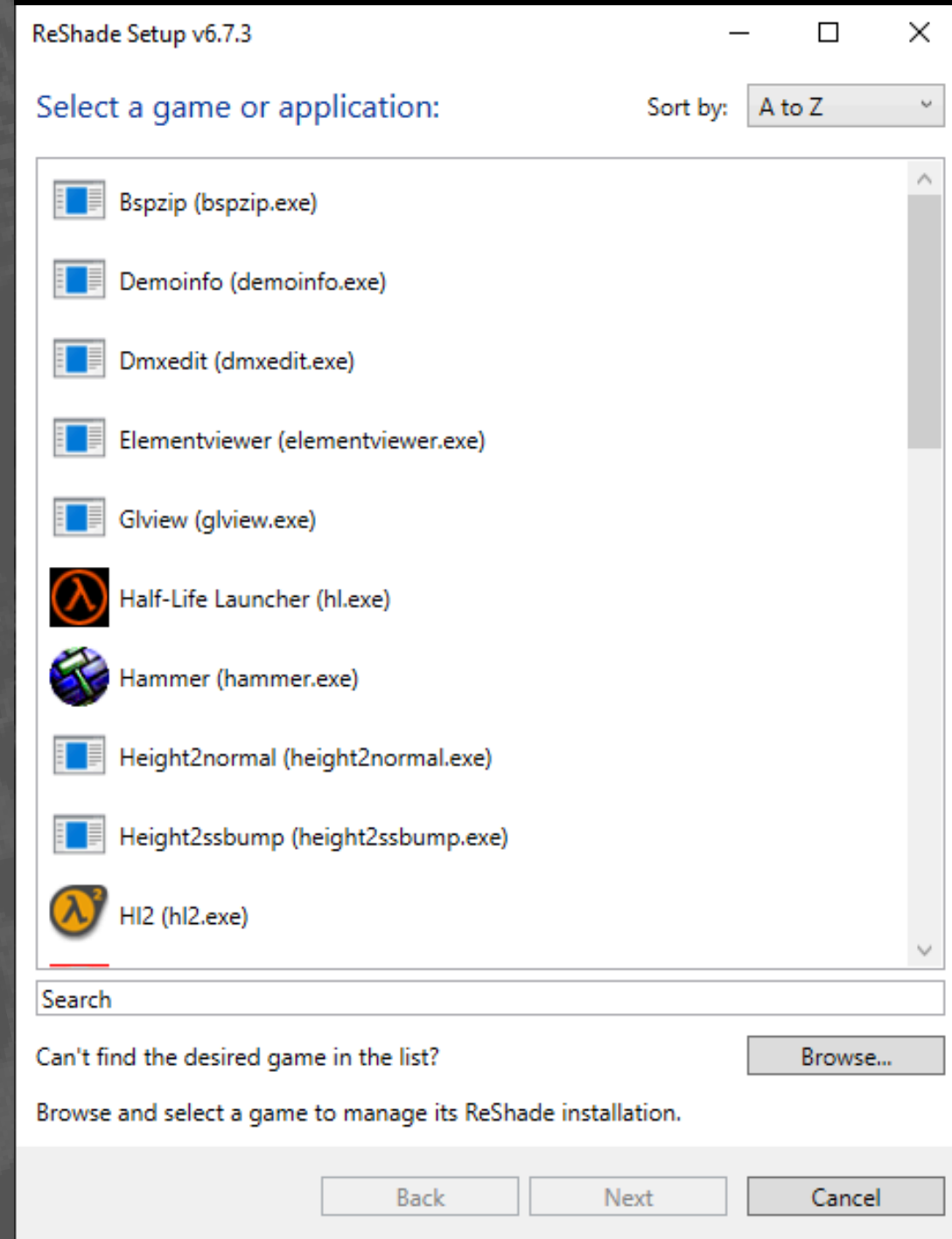


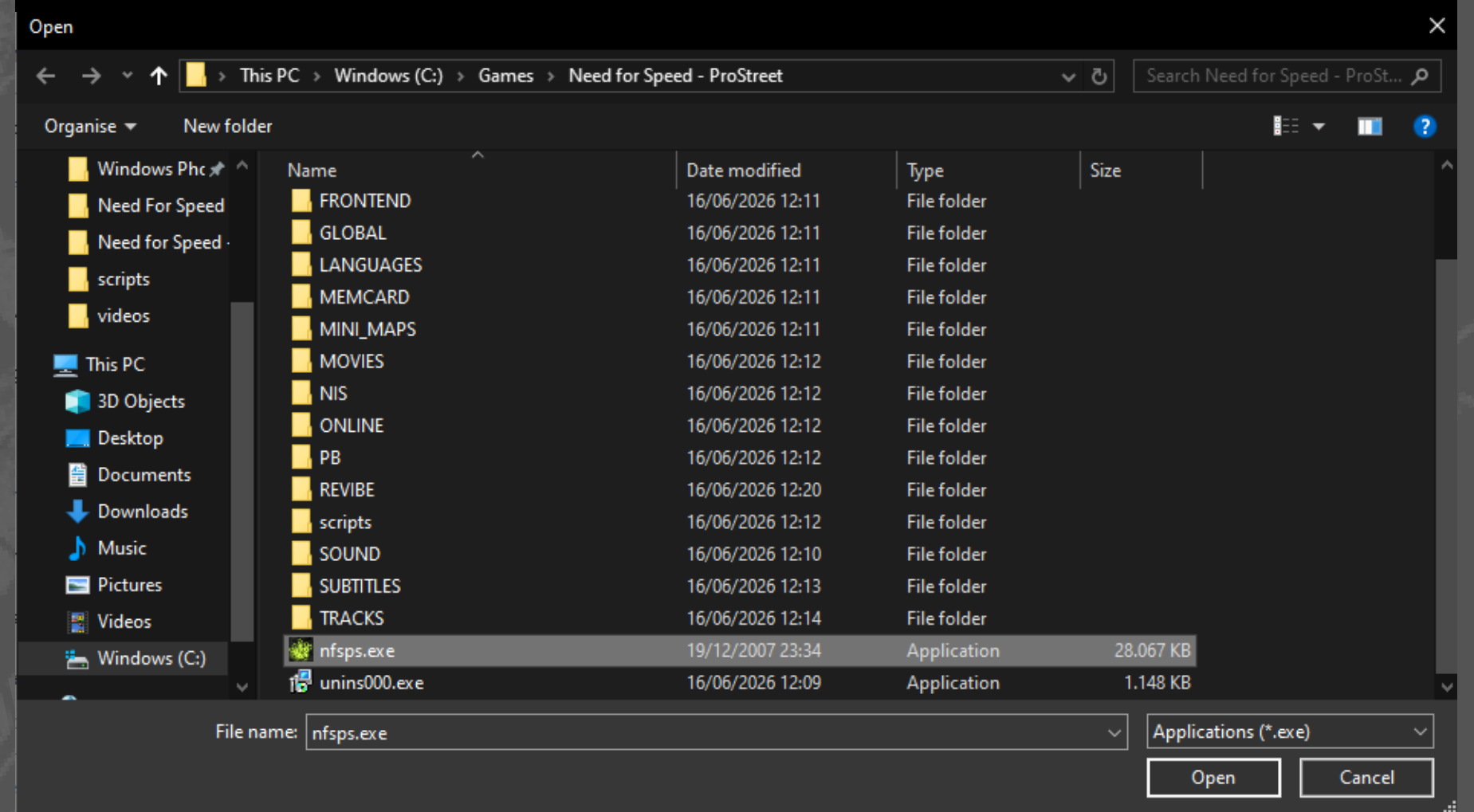
PART 1

CLICK “BROWSE...”



PART 2

FIND THE GAME'S FOLDER AND SELECT “NFSPS.EXE”



PART 3

SELECT DIRECTX9

ReShade Setup v6.7.3

Select the rendering API Nfsps uses:

The preselected option is a guess based on a quick analysis of the executable. If you do not know which rendering API the game uses, search for the game on [PCGamingWiki](https://www.pcgamingwiki.com/) and look for a section with the title "API" on its page.

- ☒ Microsoft® DirectX® 9
- ☐ Microsoft® DirectX® 10/11/12
- ☐ OpenGL.
- ☐ Vulkan.
- ☐ OpenXR™

Back

Next

Cancel

PART 4

DON'T SELECT ANYTHING, JUST CLICK "SKIP"

ReShade Setup v6.7.3

Select effects to install:

Check all

Sort by:

Default

Check all effects you want to install or update. Effects not checked here will not be installed or are left untouched when updating.

- ☒ [Standard effects](#)
A small set of utility effects (DisplayDepth, UIMask, ...)
- ☐ [SweetFX by CeeJay.dk](#)
The original SweetFX shader collection (LumaSharpen, SMAA, ...)
- ☐ [Legacy effects](#)
Effects known from previous ReShade versions (AmbientLight, ...)
- ☐ [OtisFX by Otis Inf](#)
A set of effects for virtual photographers (Cinematic DOF, ...)
- ☐ [Depth3D by BlueSkyDefender](#)
Depth-based stereoscopic effect for enhanced depth perception and immer
- ☐ [FXShaders by luluco250](#)
Various bloom effects, Flashlight, ...
- ☐ [reshade-shaders by Daodan](#)
Comic, ColorIsolation, Composition, ...
- ☐ [Shaders by brussell](#)
EyeAdaption, UIDetect, ...

Choose a preset file (.ini) to install only the effects it uses:

C:\Games\Need for Speed - ProStreet\REVIBE\Revibe_preset.ini

Browse...

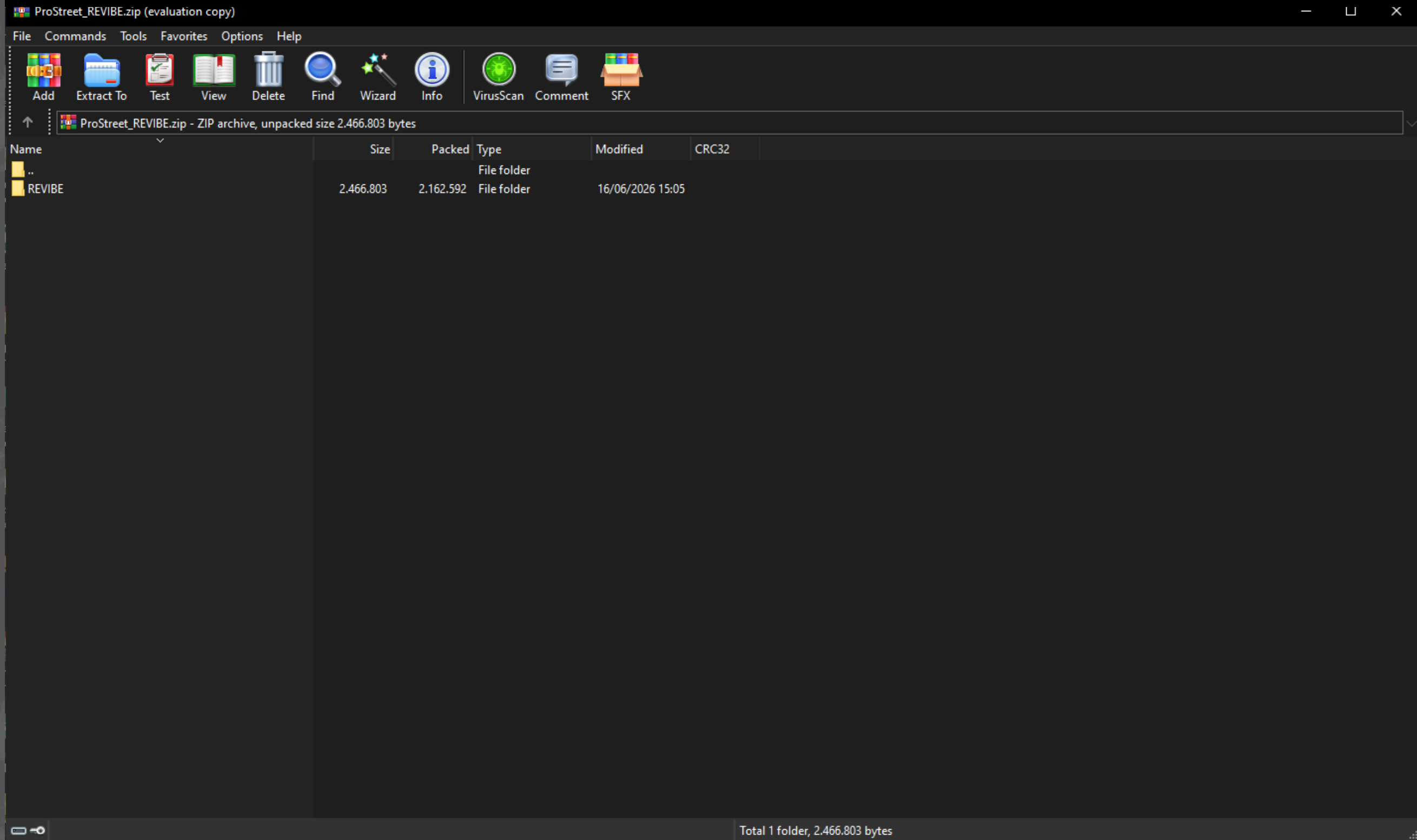
Back

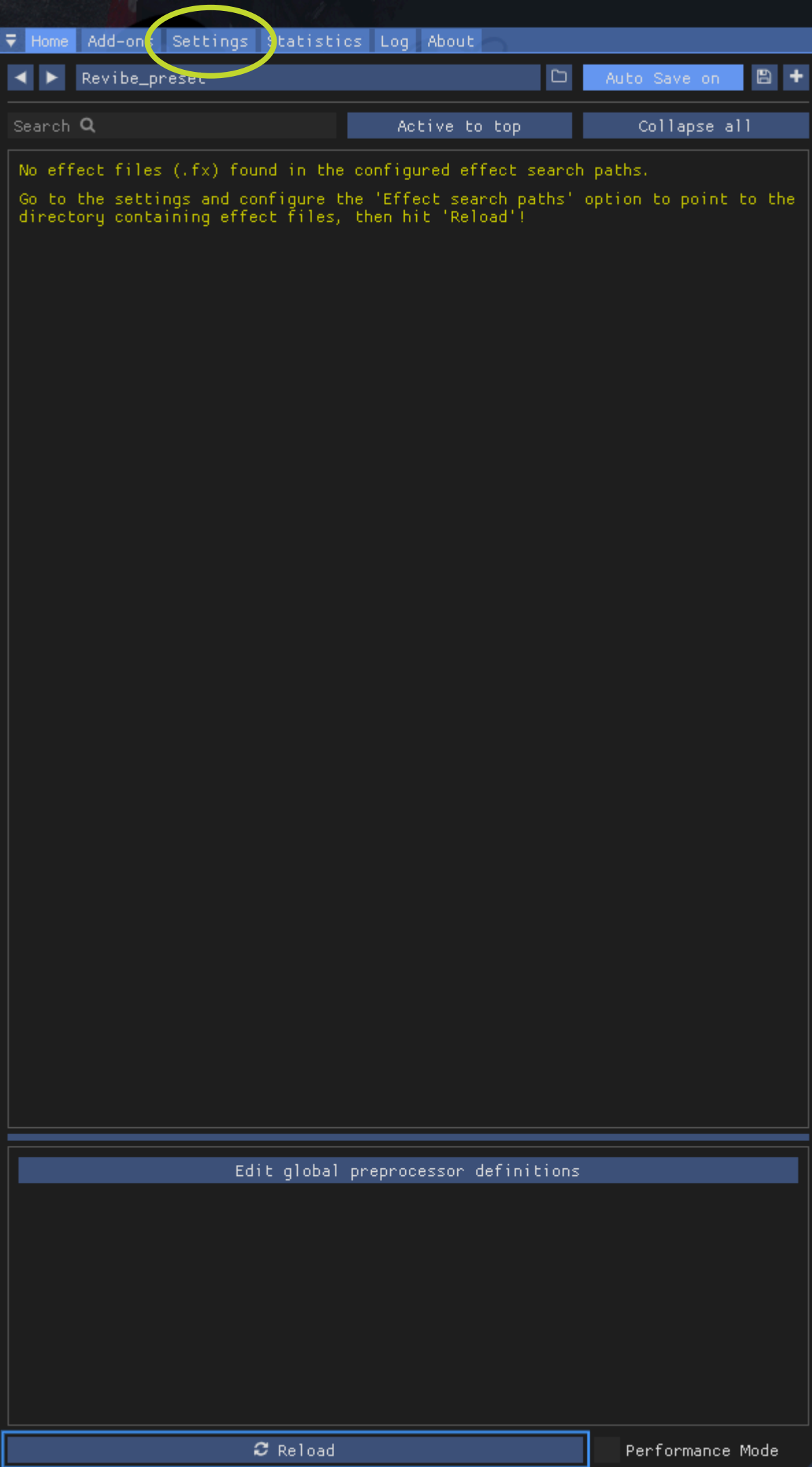
Next

Skip

PART 5

JUST DRAG THE FOLDER “REVIBE” TO THE GAME’S FOLDER





PART 1

**AFTER OPENING THE
RESHADE MENU BY
PRESSING NUMPAD 7 /
HOME, CLICK
"SETTINGS"**



M Show Messenger

▼ HomeAdd-onsSettingsStatisticsLogAbout

Open base folder in explorer

▼ General

Block all input when overlay is visible

Home

Click to set keyboard shortcut

Click to set keyboard shortcut

Click to set keyboard shortcut

Click to set keyboard shortcut

Click to set keyboard shortcut

1000

▼ Input processing

Overlay key

Effect toggle key

Effect reload key

Performance mode toggle key

Previous preset key

Next preset key

Preset transition duration

Start-up preset

+

Effect search paths

File List of directory paths to be searched for effect files (file). Paths that end in "**" are searched recursively.

Load only enabled effects

Clear effect cache

▼ Screenshots

Print Screen

.\

%AppName% %Date% %Time%_%TimeMS%

Portable Network Graphics (*.png)

✓

Clear alpha channel

Save current preset file

Save before and after images

Save separate image with the overlay visible

sound.wav

command.bat

"%TargetPath%"

.\

Hide post-save command window

Screenshot key

Screenshot path

Screenshot name

▼ Screenshot format

Screenshot sound

Post-save command

Post-save command arguments

Post-save command working c

▼ Overlay & Styling

System Default

Restart tutorial

✓

Show screenshot message

✓

Show preset transition message

Group effect files with tabs instead of a tree

Default

Dark

ProggyClean.ttf

ProggyClean.ttf

1.00

0

Show clock

Show FPS

Show frame time

Show preset name

Click to set keyboard shortcut

▼ Language

▼ Global style

▼ Text editor style

Global font

Text editor font

Global alpha

Frame rounding

FPS key

PART 2

AFTER WHICH CLICK + NEAR “EFFECT SEARCH PATHS”



M

Show Messenger

▼ HomeAdd-onsSettingsStatisticsLogAbout

Open base folder in explorer

▼ General

Block all input when overlay is visible▼

Home

Click to set keyboard shortcut

Click to set keyboard shortcut

Click to set keyboard shortcut

Click to set keyboard shortcut

Click to set keyboard shortcut

1000

Start-up preset

Effect search paths

Load only enabled effects

Clear effect cache

▼ Screenshots

Print Screen

.\

%AppName% %Date% %Time%_%TimeMS%

Portable Network Graphics (*.png)

✓

Clear alpha channel

Save current preset file

Save before and after images

Save separate image with the overlay visible

sound.wav

command.bat

"%TargetPath%"

.\

Hide post-save command window

▼ Overlay & Styling

System Default

Restart tutorial

✓

Show screenshot message

✓

Show preset transition message

Group effect files with tabs instead of a tree

Default

Dark

ProgyClean.ttf

ProgyClean.ttf

1.00

0

Show clock

Show FPS

Show frame time

Show preset name

Click to set keyboard shortcut

Input processing

Overlay key

Effect toggle key

Effect reload key

Performance mode toggle key

Previous preset key

Next preset key

Preset transition duration

Start-up preset

Effect search paths

Need for Speed - ProStreet

▼ Select

✕ Cancel

MEMCARD

MINI_MAPS

MOVIES

NIS

ONLINE

PB

REVIBE

scripts

SOUND

SUBTITLES

textures

TRACKS

Screenshot sound

Post-save command

Post-save command arguments

Post-save command working c

Global style

Text editor style

Global font

Text editor font

Global alpha

Frame rounding

FPS key

PART 3

DOUBLE CLICK “REVIBE”



M

Show Messenger

▼ Home Add-ons Settings Statistics Log About

Open base folder in explorer

▼ General

Block all input when overlay is visible ▼ Input processing

Home Overlay key

Click to set keyboard shortcut Effect toggle key

Click to set keyboard shortcut Effect reload key

Click to set keyboard shortcut Performance mode toggle key

Click to set keyboard shortcut Previous preset key

Click to set keyboard shortcut Next preset key

1000 Preset transition duration

Start-up preset

Effect search path

C:\Games\Need For Speed\Need for Speed - ProStreet\REVIBE

Folder ..

Folder Part 2 (Reshade - Textures)

Folder Shaders

Folder Textures

Snapshot key

Snapshot path

Snapshot name

Snapshot format

REVIBE

Select Cancel

Load only enabled effects

Clear effect cache

▼ Screenshots

Print Screen

.\

%AppName% %Date% %Time%_%TimeMS%

Portable Network Graphics (*.png)

Clear alpha channel

Save current preset file

Save before and after images

Save separate image with the overlay visible

sound.wav

command.bat

"%TargetPath%"

.\

Hide post-save command window

Screenshot sound

Post-save command

Post-save command arguments

Post-save command working

▼ Overlay & Styling

System Default

Restart tutorial

Show screenshot message

Show preset transition message

Group effect files with tabs instead of a tree

Default

Dark

ProgyClean.ttf

ProgyClean.ttf

1.00

0

Global style

Text editor style

Global font

Text editor font

Global alpha

Frame rounding

Show clock

Show FPS

Show frame time

Show preset name

Click to set keyboard shortcut

FPS key

PART 4

CLICK (NO DOUBLE CLICK) "SHADERS" AND SELECT, SAME THING ALSO IN THE PATH "PART 2 (SHADERS - TEXTURES)", WHERE THERE WILL BE ANOTHER "SHADERS" TO SELECT



M

Show Messenger

▼ HomeAdd-onsSettingsStatisticsLogAbout

Open base folder in explorer

▼ General

Block all input when overlay is visible▼

Home

Click to set keyboard shortcut

Click to set keyboard shortcut

Click to set keyboard shortcut

Click to set keyboard shortcut

Click to set keyboard shortcut

1000

Start-up preset

C:\Games\Need For Speed\Need for Speed - ProStreet\R

C:\Games\Need For Speed\Need for Speed - ProStreet\R

+

Texture search paths

C:\Games\Need For Speed\Need for Speed - ProStreet\REVIBE

...

Part 2 (Reshade - Textures)

Shaders

Textures

Screenshot path

Screenshot name

Screenshot format

REVIBE

Select

Cancel

Load only enabled effects

Clear effect cache

▼ Screenshots

Print Screen

.\

%AppName% %Date% %Time%_%TimeMS%

Portable Network Graphics (*.png)

✓ Clear alpha channel

Save current preset file

Save before and after images

Save separate image with the overlay visible

sound.wav

command.bat

"%TargetPath%"

.\

Hide post-save command window

▼ Overlay & Styling

System Default

Restart tutorial

✓ Show screenshot message

✓ Show preset transition message

Group effect files with tabs instead of a tree

Default

Dark

Proggyclean.ttf

Proggyclean.ttf

1.00

0

Show clock

Show FPS

Show frame time

▼ Input processing

Overlay key

Effect toggle key

Effect reload key

Performance mode toggle key

Previous preset key

Next preset key

Preset transition duration

▼ Language

Global style

Text editor style

Global font

Text editor font

Global alpha

Frame rounding

PART 5

SAME THING GOES WITH “TEXTURES”

M

Show Messenger

▼ HomeAdd-onsSettingsStatisticsLogAbout

◀▶ Revibe_preset📁 Auto Save on📄+

Search 🔍Active to topCollapse all

No effect files (.fx) found in the configured effect search paths:
C:\Games\Need For Speed\Need for Speed - ProStreet\REVIBE\Shaders\
C:\Games\Need For Speed\Need for Speed - ProStreet\REVIBE\Part 2 (Reshade - Tex

Go to the settings and configure the 'Effect search paths' option to point to the directory containing effect files, then hit 'Reload'!

Edit global preprocessor definitions

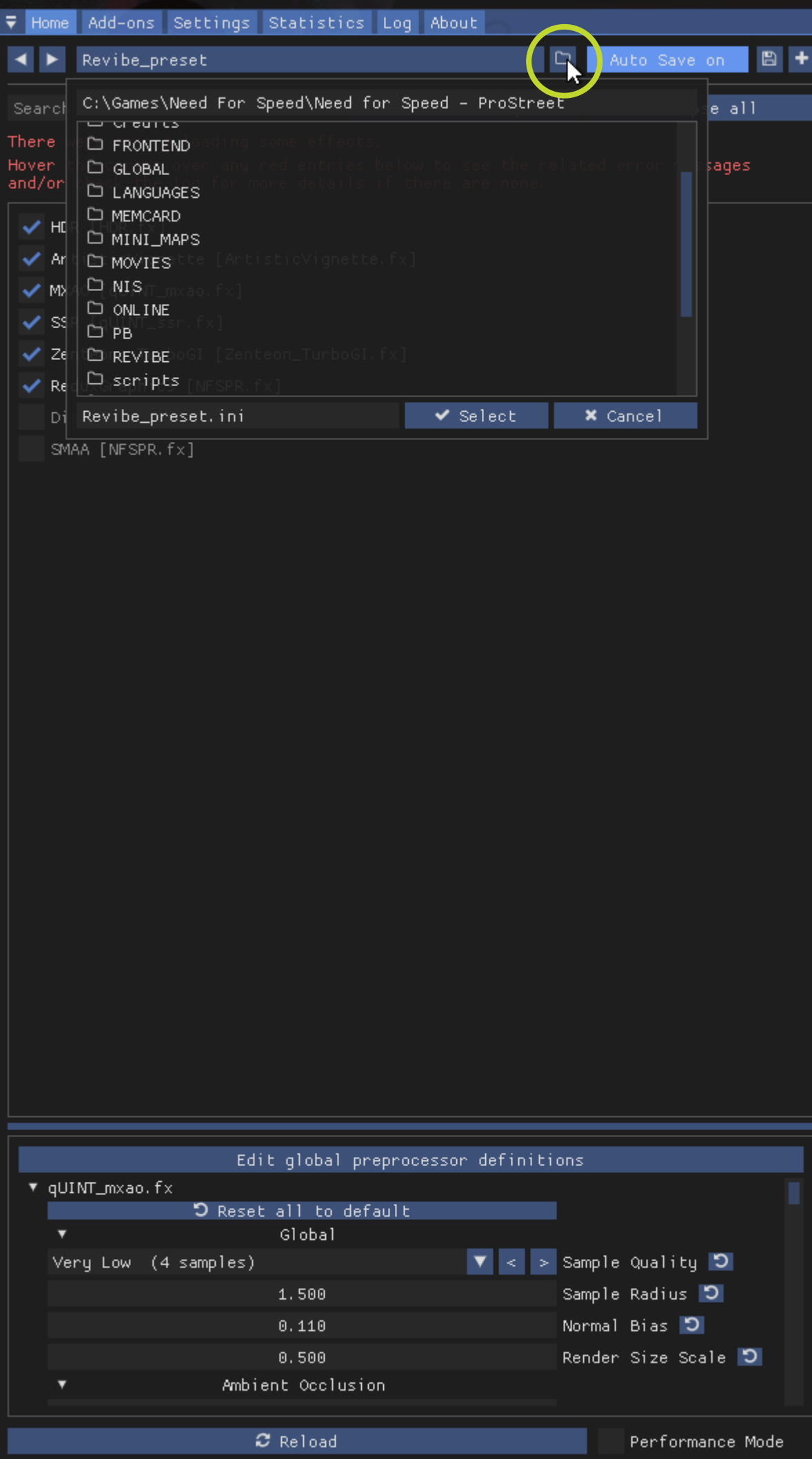
↻ Reload

Reload all effects (can hold 'Ctrl' while clicking to clear the effect cache before loading).

PART 6

AND THEN “RELOAD”



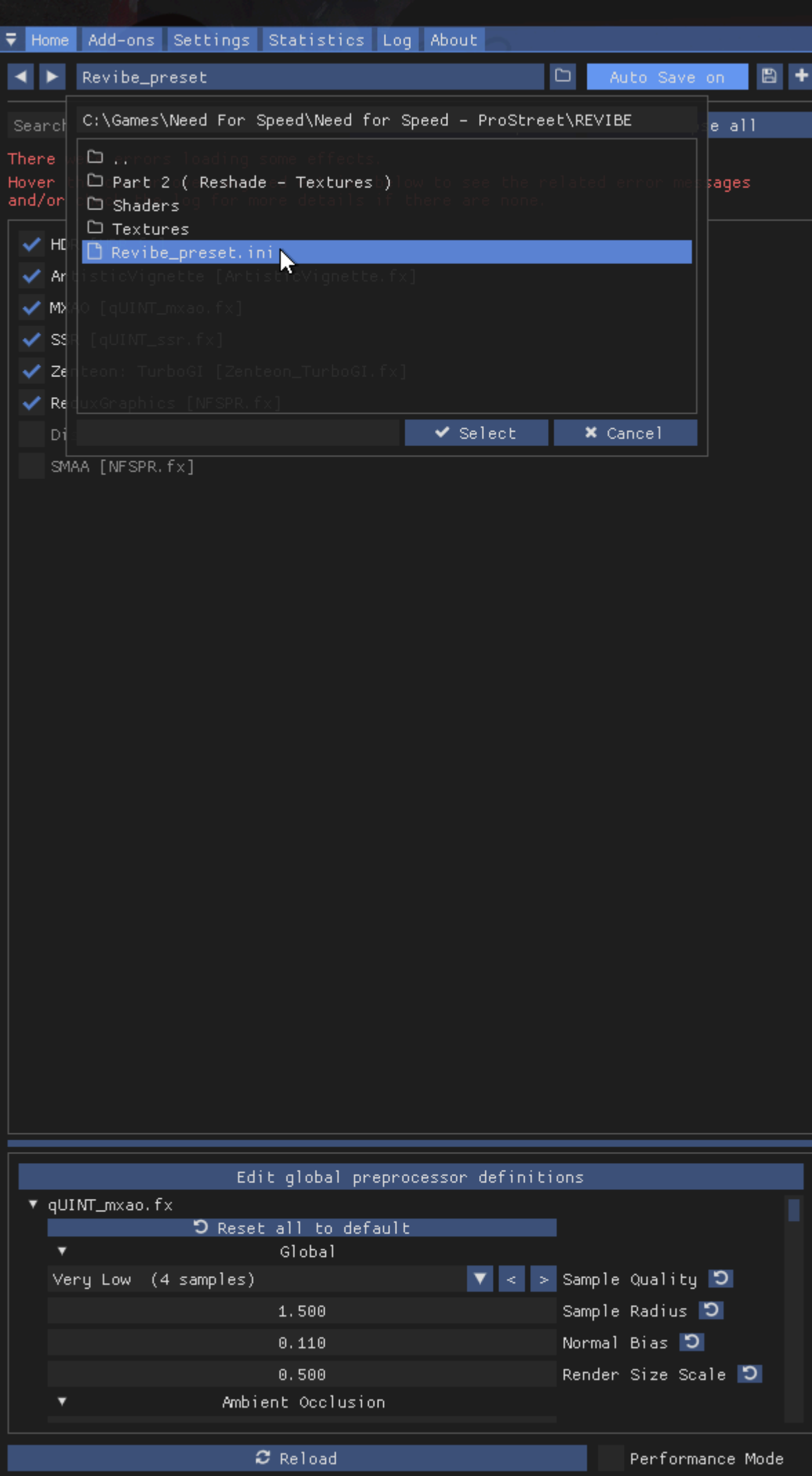


PRESET PART 1

OPTIONAL IF THE
PRESET DOES NOT LOAD
AUTOMATICALLY

CLICK THE FOLDER ICON





PRESET PART 2

DOUBLE CLICK “REVIBE”
AND SELECT
“REVIBE_PRESET.INI”



M Show Messenger